

SHOPMADE DOVETAIL RECESS TOOL • BANDSAWING ROUND OBJECTS • CONCEPT DEVELOPMENT

AMERICAN WOODTURNER

Journal of the American Association of Woodturners

February 2016 vol 31, no 1 • woodturner.org

CURT THEOBALD ELEMENTS OF A BALANCED LIFE

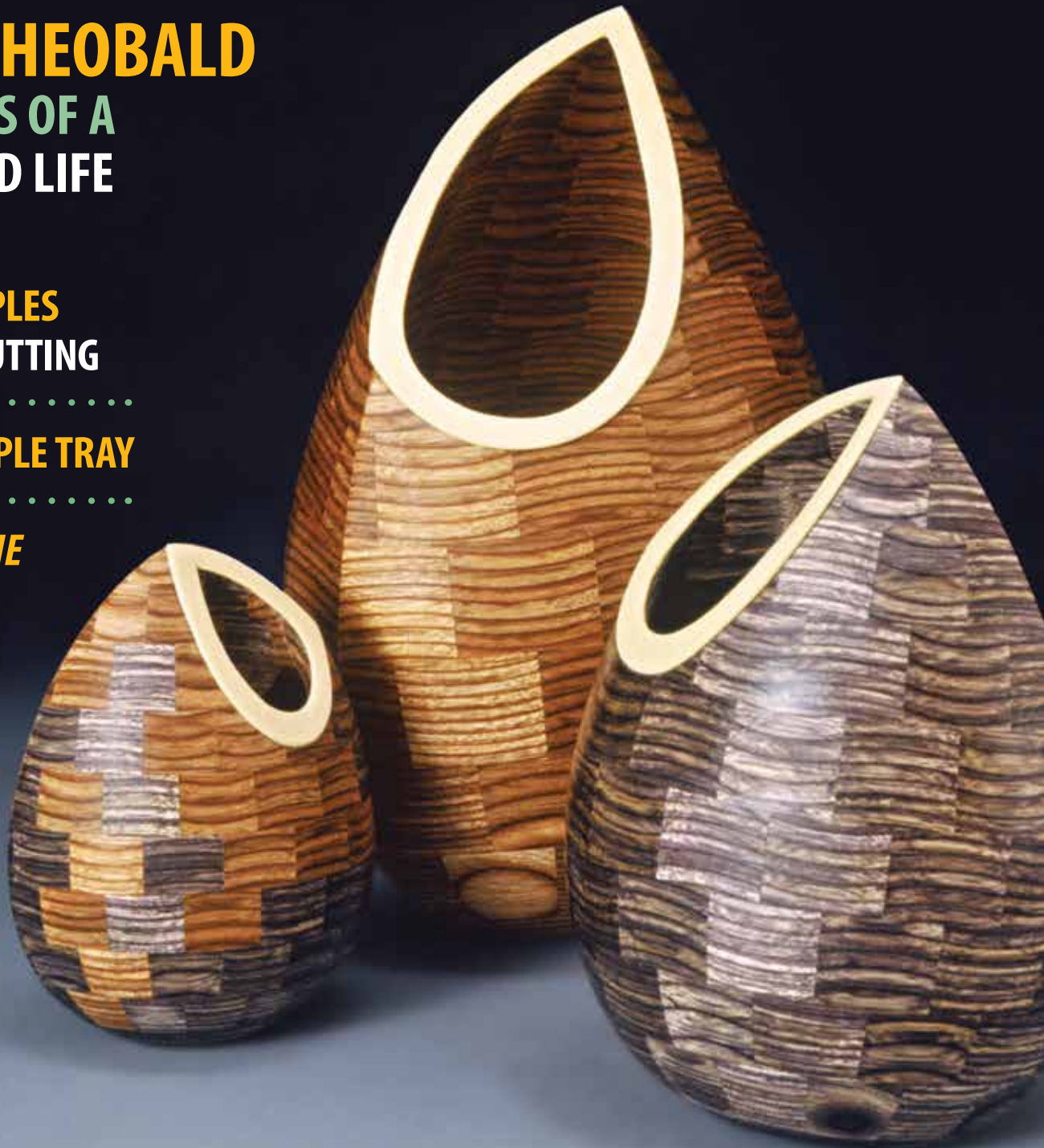
TEN PRINCIPLES OF CLEAN CUTTING



TURN A SIMPLE TRAY



SHOCK OF THE TIMELESS



MEMBERS' GALLERY

Derrick A. Te Paske, Massachusetts

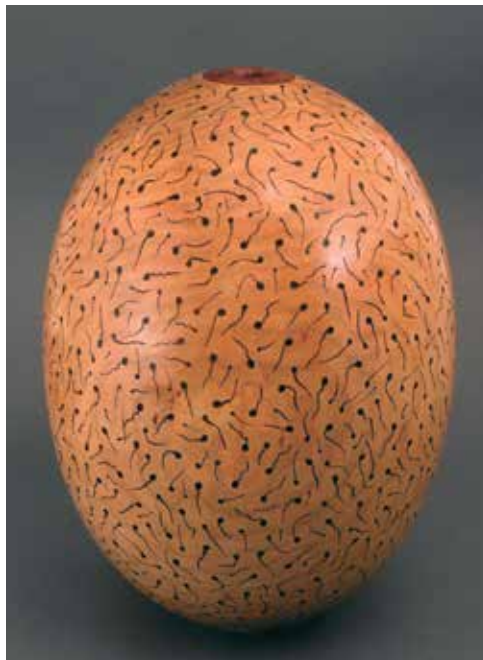
As a professor of media studies at Framingham State University (Massachusetts), I am primarily concerned with theoretical principles and digital production/reproduction methods. In purposeful contrast, my art involves wood and other common tangible materials, employs tools and processes that are decidedly low tech, and results in unique and very physical objects. I have always been interested in classical forms, the ancient, the primitive, and the strange.

For more, visit derricktepaske.com.

(Left) *Sex Pot V: Oval*, 2012, Black cherry, jarrah burl faux ovum, 15" x 10" (38cm x 25cm)
Collection of Lisa de Lima

(Right) *Uluburun Ritual Vessel*, 2015, Butternut, patinated copper leaf, 12" x 8" x 6" (30cm x 20cm x 15cm)

This piece was inspired by the name of the oldest shipwreck ever found, which dated to ~1300 BCE. It is the first finished piece from a series of imagined artifacts I have been contemplating for several years.



Barry Todd, Ohio

Dragonfly's Lair resulted from a bit of intentional whimsy between "serious" pieces. My good friend and instructor Jim Burrowes had given me a piece of bamboo laminate and challenged me to turn something from it. The next day, when the plain little bowl was completed, I took it off the lathe and went to set it on my workbench when I saw a piece of desert ironwood Jim had given me earlier. I asked myself how I could combine the two, and what you see is the result. The project reminded me that not every piece has to make a statement about our skills and that there are times when we should simply have fun and be creative.

After making *Dragonfly's Lair*, more or less as a joke, I became intrigued by the possibilities of expanding the basic concept in a more serious vein, yet retaining the original sense of whimsy. *Butterfly Phoenix* was the result. Now, I have a few more ideas along the same lines waiting to take form.



(Left) *Butterfly Phoenix*, 2015, Mangrove driftwood, spalted maple, African blackwood, oak burl, 18" x 8" (46cm x 20cm)

Photo: Steve Wolfe

(Right) *Dragonfly's Lair*, 2015, Bamboo laminate, desert ironwood, African blackwood, coffee wood, 6" x 6½" (15cm x 17cm)

Photo: Steve Wolfe